

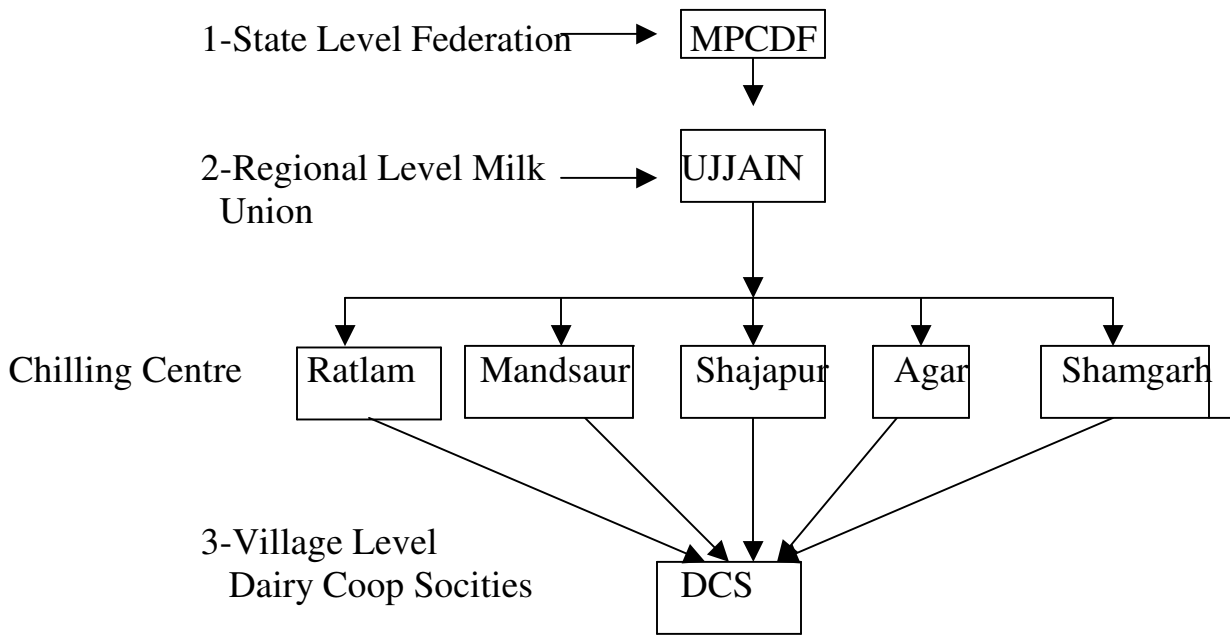
UJJAIN SAHAKARI DUGDHA SANGH MARYADIT, UJJAIN
Registered Office - Maxi Road, Ujjain 456001
Telephone No. 0734-2527061,62, Fax 0734-2527063, E Mail - udsms@sify.com
(A Cooperative sector organization)
Registered under MP Cooperative Societies Act

MISSION

- To carry out activities for promoting production , procurement , Processing , manufacturing and marketing of milk and milk products for socio-economic development of the farming community.

ORGANISATION

Three Tier Structure of Dairy Cooperatives



AREA OF OPERATION

- The Area of Operation of Ujjain Dugdha Sangh covers Ujjain, Ratlam, Mandasaur, Neemuch, Shajapur(Except Shujalpur and Kalapipal Tehsil) Districts, Badnawar Tehsil of Dhar District and few villages of Dewas District.

INFRASTRUCTURE

- Ujjain Dugdha Sangh has modern processing plant and chilling centres at various places as follows :-

Sr.No.	Place where plant/CC is situated	Capacity Litre per day
1	Ujjain Dairy Plant	Installed Capacity 2,50,000 LPD Currently working with 60,000 LPD
2	Ratlam Dairy Plant	50,000 LPD
3	Mandasaur Dairy Plant	75,000 LPD
4	Shajapur CC	10,000 LPD
5	Agar CC	10,000 LPD
6	Shamgarh CC	5,000 LPD

INSTITUTIONAL (MARKETING)

Ujjain Dugdha Sangh has a large marketing net work. As per demand Pasteurized , Standerised milk and fresh milk products are supplied to Ujjain, Shajapur, Agar, Sarangpur, Pachor, Nagda, Kharchrod, Ratlam, Jaora, Sailana, Mandsaur, Neemuch, Vikram Nagar, Banswada, Badnawar, Chhoti Sarwan, Badi Sarwan, Alot , Danpur , Bajna, Manasa, Shamgarh, Suwasara, Sitamau cities ensuring quality assurance, freshness and timely supply.

Performance on Key Parameters

Particulars	2000-01	2001-02	2002-03	2003-04	2004-05	2005-06
Dairy Cooperative	707	658	615	671	698	721
Farmer Members	42293	41299	38593	39724	41755	40955
Milk Procurement per day in Kgs	66021	59840	50897	51633	74858	80028
Local Milk per day in Litrs	19441	19745	20085	24422	29702	28398
No.of AI Centre	110	134	147	126	120	120
No.of AI Done	17202	20615	21649	18445	21682	11593
Balanced Cattle Feed Sale by DCSs	4916.9	4705.0	4934.0	4220.2	5166.0	5147.2
Cattle Induction	13519	14014	6329	10204	8417	4297
Turnover (Lakh Rs)	2855.81	3183.26	2292.74	2693.12	4005.76	4089.17